

## Pumping System Solutions

For peace of mind and stress free operation, Ferrier Pumps can offer a service agreement to maintain and prolong the equipment life of your pumping system

This service can include:

-Monthly check ups by our experienced staff.



- Maintenance visits at six monthly intervals.
- Identification of plant repairs during visits.
- Cost effective repairs.
- Improved protection against the risk of pump failure.
- Prompt response to pump system failure.
- 24 hour call out for emergencies.
- Provision of alarm/monitoring systems to give early warning indication of equipment failure.
- A professional service at a competitive price.

**CONTACT YOUR NEAREST BRANCH  
FOR A FULL QUOTATION**

# Ferrier Pumps

Branches in:  
Edinburgh ~ Glasgow ~ Aberdeen

Burlington Street, Leith,  
Edinburgh EH6 5JL  
Tel: 0131 553 4001  
Fax: 0131 553 1272  
Email: [edinburgh@ferrierpumps.co.uk](mailto:edinburgh@ferrierpumps.co.uk)

71 Cumbernauld Road, Dennistoun,  
Glasgow G31 2SN  
Tel: 0141 554 3454  
Fax: 0141 554 2772  
Email: [glasgow@ferrierpumps.co.uk](mailto:glasgow@ferrierpumps.co.uk)

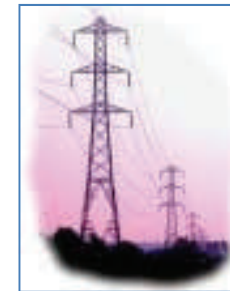
Units 4&5, Portlethen Ind Est,  
Barclayhill Place, Portlethen,  
Aberdeenshire AB12 4PF  
Tel: 01224 782022  
Fax: 01224 780050  
Email: [aberdeen@ferrierpumps.co.uk](mailto:aberdeen@ferrierpumps.co.uk)

website: [www.ferrierpumps.co.uk](http://www.ferrierpumps.co.uk)

# Ferrier Pumps



## Early Warning and Alarm Monitoring Systems for Pumping Stations



House Builders can not hand over pumping stations for Adoption by Scottish Water until all phases of their development are complete.



For cost effective operation and to maintain the condition of your pump station to adoptable standards, Ferrier's can provide telephone monitoring systems to give 24 hour, on site coverage.



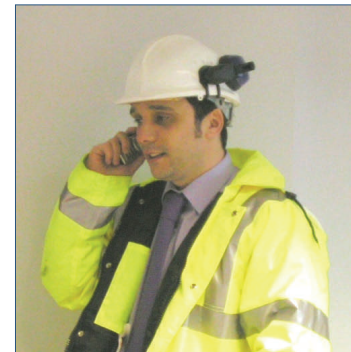
The telemetry systems will ensure your pumping station is maintained and operated at 100% until the Adoption handover date.

## Alarm Monitoring Systems

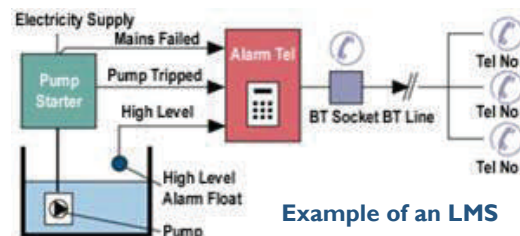
### Landline Monitoring System

The LMS monitors the operation of a pumping system or process.

If the equipment detects a failure of the main power supply, or either of two other alarm conditions, the LMS Landline automatically dials up to three telephone numbers with a recorded message stating which alarm has been detected.



- 230v or 400v versions
- BAPT approved
- Battery Back-up



Example of an LMS Landline System

## Alarm Monitoring Systems

### Mobile Text Monitoring System

The MTM monitors the operation of a pumping station or process.

If the equipment detects a failure of the main power supply, or any of three other alarm conditions, (up to seven other alarm conditions optional), the MTM Mobile Text automatically sends a text message to up to 20 mobile phone numbers to report the fault.



A text command may be sent back to the MTM to operate either of two outputs (eg. To reset a fault).

- \* Battery Back-up
- \* 2-way communication
- \* Compatible with any mobile network